

Published August 15, 2022

Multiple BCG vaccinations for prevention of COVID-19 and other infectious diseases in Type 1 diabetes

Authors

Denise L. Faustman*¹; Amanda Lee², Emma R. Hostetter²; Anna Aristarkhova²; Nathan C. Ng²; Gabriella F. Shpilsky²; Lisa Tran²; Grace Wolfe²; Hiroyuki Takahashi¹; Hans F. Dias²; Joan Braley¹; Hui Zheng¹; David A. Schoenfeld¹; Willem M. Kühtreiber¹

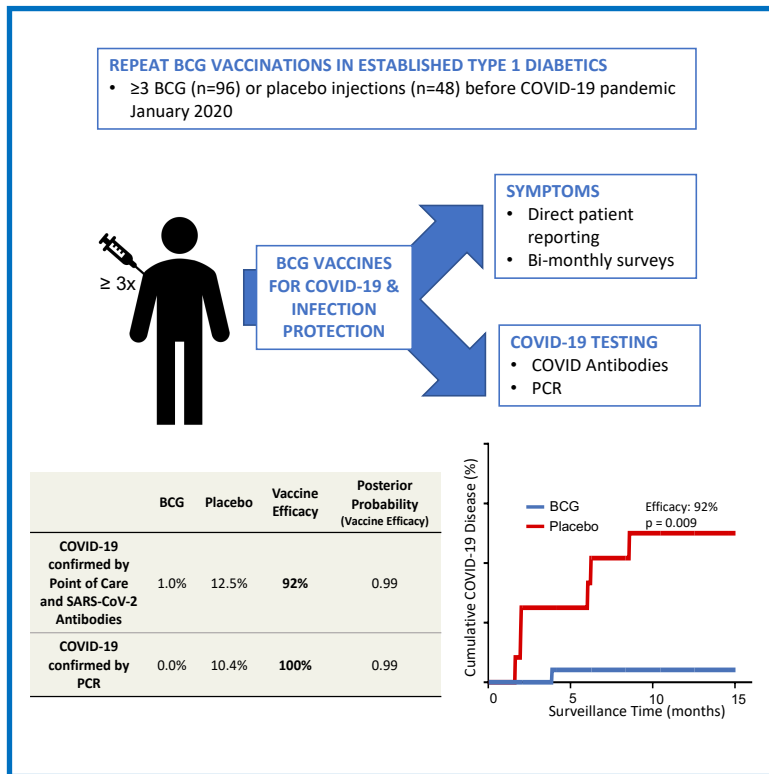
Author's Affiliations

¹Massachusetts General Hospital and Harvard Medical School, Boston, MA, 02192, USA

²Massachusetts General Hospital, Boston, MA, 02192, USA

*Lead Contact: dfaustman@mgh.harvard.edu (D.L.F.)

Graphical Abstract



In Brief

In a randomized, double-blinded, placebo-controlled, Phase 2/3 trial, Faustman et al. investigate the safety and efficacy of multiple doses of the >100-year old Bacille-Calmette-Guerin (BCG) vaccine against COVID-19. They also determine vaccine efficacy against other infectious diseases, which if present would suggest platform protection against new SARS-CoV-2 variants.

Highlights

- We report on our randomized trial of multi-dose BCG for protection against COVID-19
- BCG is safe and has 92% efficacy versus placebo against COVID-19
- Findings also suggest platform protection against many infectious diseases
- Efficacy takes 1-2 years to manifest, but the protection may last decades

SUMMARY

CONFIDENTIAL

There is a need for safe and effective platform vaccines to protect against COVID-19 and other infectious diseases. In this randomized, double-blinded, placebo-controlled Phase 2/3 trial, we evaluate the safety and efficacy of multi-dose Bacillus Calmette-Guerin (BCG) vaccine for prevention of COVID-19 and other infectious disease in a COVID-19-unvaccinated, at-risk-community-based US cohort. The at-risk population are adults with type 1 diabetes. In this parallel trial design, 144 subjects are enrolled, 96 are randomized to BCG and 48 to placebo with 2:1 randomization, and no drop-outs over the 15-month trial. A cumulative incidence of 12.5% of placebo-treated and 1% of BCG-treated participants meets criteria for confirmed COVID-19, yielding a vaccine effectiveness of 92%. The BCG group also displays fewer cumulative infectious disease symptoms and lesser severity, and fewer infectious disease events per patient, including COVID-19. There are no BCG-related systemic adverse events. BCG's broad-based infection protection suggests that it may potentially provide platform protection against new SARS-CoV-2 variants and other pathogens.

(Clinicaltrials.gov:NCT02081326)

Key words: Bacillus Calmette-Guerin (BCG), COVID-19, infectious diseases, Phase 2/3 trial, host microbe interactions, Hygiene Hypothesis, type 1 diabetes, autoimmune, randomized double blinded clinical trial, vaccine (Clinicaltrials.gov:NCT02081326)

INTRODUCTION

The BCG vaccine is a >100-year old vaccine originally developed for tuberculosis protection. It is heralded as the safest vaccine ever developed, with 3-4 billion people already vaccinated and an annual 120 million newborns vaccinated¹. It is highly affordable at about 10-75 cents/dose. Over the last 17 years, randomized clinical trials and epidemiology studies have shown that the BCG vaccine protects humans from a multitude of infections, including upper respiratory tract infections, leprosy, malaria, viral, and bacterial infections²⁻¹⁶. The first indication of the broad infectious disease protective abilities of this vaccine came 100 years ago when Albert Calmette, the vaccine's co-inventor, noted a four-fold decline in child mortality (unrelated to tuberculosis) in vaccinated children, presumably from broad infectious disease protection¹⁷. These protective effects appear also when adolescents are re-vaccinated with BCG after the typical newborn dose¹⁰. The BCG vaccine may also protect humans from immune diseases such as type 1 diabetes and multiple sclerosis¹⁸⁻²¹. The mechanisms behind these wide-ranging benefits are a topic of active scientific discovery.

With the onset of the SARS-CoV-2 pandemic, some epidemiology studies began to uncover an association between neonatal BCG vaccination and reduced morbidity and mortality from COVID-19, even in older adults decades after the typical neonatal vaccinations, on a country-by-country basis²²⁻⁴⁰. In some other global populations with varying neonatal exposures, different BCG strains and other populations, benefits were not observed^{24,41-47}. Since the US has never vaccinated newborns or adults with BCG, a randomized trial of BCG for possible protection from SARS-CoV-2 infection offers a clean comparison in a vaccine-naïve adult US population. This parallel trial was adapted from an ongoing double blinded randomized trial of BCG for treatment of long-standing adult type 1 diabetes so all cohorts were fully vaccinated with 3 BCG or placebo vaccinations at the start of the COVID-19 pandemic in the US, January 1, 2020. Type 1 diabetics represent one of the most vulnerable populations in the US for morbidity and mortality from COVID-19⁴⁸. Type 1 diabetics also have well-known increased infectious disease risk including COVID-19⁴⁹.

As the COVID-19 pandemic worsens, vaccine development assumes center stage. But antigen-specific vaccines, the focus of most clinical programs, are struggling to keep pace with new viral variants. The ideal vaccine should be safe, efficacious, affordable, and offer durable protection against ever-changing viral variants and future infectious disease pandemics. We conducted a randomized, double-blinded, placebo-controlled platform trial over 15 months (January 1, 2020 to April, 2021) to determine whether the BCG vaccine might offer a platform vaccine technology for broad-based infectious disease protection, including protection against COVID-19 in the vulnerable type 1 diabetic population.

RESULTS

We assessed the impact of multi-dose BCG vaccinations for protection from SARS-CoV-2 infections and other infections (Figure 1A). All participants at the start of this parallel study had

3 BCG vaccinations or 3 placebo vaccinations over a 2 year time period preceding the pandemic.

The Trial, Which had No Drop-Outs, Found that Multi-Dose BCG Was Safe

All 144 participants were US citizens not previously vaccinated with BCG and had long-standing type 1 diabetes, a co-morbid condition for worse COVID-19 disease and symptoms (Figure 1B)⁴⁹. None of the participants was lost to follow-up or dropped out during the current 15 month parallel study. A total of 150 participants were enrolled for the first study on type 1 diabetes; at the start of this parallel clinical trial (January 2020) evaluating the effects of BCG multi-dosing on overall infections and COVID-19 specific disease, there were 96 BCG-treated and 48 placebo-treated. These recipients were all vaccinated with BCG or placebo in the two years prior. Unlike antigen specific vaccines no BCG-related systemic adverse events occurred in any of the participants during the vaccination time period. BCG vaccines do cause local skin reactions that usually appear at 2-4 weeks. No excess local reactions were reported as adverse events. During this time period of this trial, other COVID-19 vaccines were not yet available and therefore had no influence on this study.

The BCG Group Had Fewer Cases of Confirmed COVID-19 than the Placebo Group, with Vaccine Efficacy at 92%

The cumulative incidence of confirmed COVID-19 in the BCG cohort was 1 out of 96 (1%), whereas it was 6 out of 48 (12.5%) in the placebo group at the end of the 15-month COVID-19 trial. The criteria for a confirmed case of COVID-19 were developed early in the pandemic prior to widespread availability of PCR. Therefore, the criteria required (see Methods and Figure S1) were reporting at least 1 FDA-defined symptom of COVID-19 plus positive findings on ≥ 5 out of 10 assays (9 SARS-CoV-2 IgG antibody binding assays and a tenth assay that included PCR testing for viral RNA). Because of the limited PCR availability, several subjects were diagnosed on basis of symptoms plus multiple positive serologies only. The efficacy of BCG (vs placebo) for preventing a confirmed case of COVID-19 was 92% (Figure 2). Monte Carlo statistics resulted in a Posterior Probability (with Vaccine Efficacy $>30\%$) of 0.99. Since the current standard of diagnosis for COVID-19 is based on PCR, we also calculated BCG efficacy based on at least one FDA-defined symptom of COVID-19 plus a positive PCR alone. We found no symptomatic subjects that were PCR-positive in the BCG group (0%), whereas 5 symptomatic and PCR-positive subjects were in the placebo group (10.4%). These results indicate an efficacy of 100% at 0.99 Posterior Probability if only PCR results are considered. This can also be readily visualized in the PCR cumulative graph (Figure 3B), which shows the first detected COVID-19 case based on PCR at 7 months into the trial, whereas serology testing for SARS-CoV-2 antibodies revealed the first positive cases as early as two months (Figure 2B).

There were no deaths from COVID-19 in either the BCG group or the placebo group.

Heatmap Comparison Shows Higher SARS-CoV-2 Antibody-level Presence and Intensity in the Placebo Group Over the BCG Group

Heatmap comparisons of SARS-CoV-2 antibody-level presence and intensity (Z-scores versus pre-COVID baseline) show a significant increase in infections and the intensity of the antibody response in symptomatic subjects in the placebo over the BCG group (Figure 3A). These data

are in symptomatic subjects. For completeness we also present the COVID-19 antibodies in all trial subjects, with and without symptoms. The heatmap of all trial participants again shows the presence of COVID-19 infections almost exclusively in the placebo subjects (Figure S2).

Cumulative graphs for the anti-COVID-19 antibody tests to different regions of the virus are shown in Figure 2B. Number at risk data are shown in Figure S4. The identity of the SARS-CoV-2 protein region eliciting an antibody response, mostly the Spike protein, is denoted by the Roman numerals listed in Figure S1. Six protein regions eliciting an antibody response were from viral Spike Protein 1, two were located in Spike Protein 2, and one viral region was specific for antibodies against viral RNA polymerase. Almost all COVID-19 viral regions included in these tests show significantly increased accumulation of antibody reactivity in the Placebo group as compared to the BCG group, except for COVID-19 viral epitope II.

The BCG Group (vs Placebo Group) Exhibited Fewer Infections per Patient and Fewer Infectious Disease Symptoms and Severity assessed by the Total and Average Infectious Disease Index

We analyzed infectious disease events collected as “adverse events” by the Medical Dictionary for Regulatory Activities (MedDRA) classification coding (Figure S3B). Prior clinical trial data suggests BCG vaccination exhibits “off-target” effects, i.e., viral and bacterial infectious disease prevention (and, in this study, prevention of SARS-CoV-2 viral infections) beyond its intended use in tuberculosis protection^{22-25,27,37-39,50}. Using the time period of the current COVID-19 trial, we analyzed infectious disease symptoms including COVID-19 and other infections. The cumulative infectious diseases reported by the subjects and represented as cumulative infections per patient were significantly fewer in the BCG vs placebo group (Poisson model comparing adverse events rates $p=0.004$; Figures 4A and S3B). These findings are likely to represent the minimum protection. Some clinical trial data for other off-target effects of the BCG vaccine suggest the time period for BCG clinical effectiveness is often in the two- to three-year range after vaccinations begin^{19,20}. To look at this time period of BCG onset of vaccine effectiveness but in the setting of infection protection, the clinical trial infectious disease adverse events were broken into the pre-COVID trial period during which the three BCG vaccines were administered versus the subsequent 15-month time period of this current clinical trial (Figure 4B). While comparison of infectious adverse events in BCG versus placebo groups during the current trial had a significant Poisson distribution ($p=0.004$), there was no significant difference in all infections during the pre-COVID trial period (Poisson $p=0.46$). These data suggest that, just like other reported off-target events of the BCG vaccine, it might similarly take about 2 years after the first vaccine for maximal effectiveness for the platform infectious disease protection.

Our intent was to evaluate the severity of COVID-19 symptoms with BCG treatment as compared to placebo in confirmed COVID-19 patients, but this was not possible because only one subject in the BCG group fit our criteria for confirmed COVID-19. We therefore analyzed the symptoms in symptomatic BCG- and placebo-treated participants--regardless of whether they were confirmed COVID-positive--to understand the impact of BCG on overall infectious disease severity.

Using data from symptom surveys based on FDA guidelines⁵¹ that were completed every two months, we calculated a Total and Average Infectious Disease Index (Figure S3A).

Indexes for each individual patient were calculated separately and then averaged across all subjects in the BCG and placebo cohorts (Figure 4C). Comparing only symptomatic patients, the Total Covid Index in the BCG cohort (48 ± 11 , $n=31$) was significantly reduced vs placebo (152 ± 70 , $n=20$; $p=0.04$). The Average Infectious Disease Index also showed a significant decrease (BCG 13 ± 2 , $n=31$, versus placebo 23 ± 7 , $n=20$; $p=0.04$). This indicates that BCG vaccination reduced the severity and duration of all infectious disease symptoms as compared to placebo. Symptomatic patients in the BCG group also reported significantly fewer number of days of missed work as compared to the placebo group (Figure 4D; BCG 0.77 ± 0.28 ; placebo 2.26 ± 0.84 , $p=0.02$). All individual average symptom scores (12 out of 12) were more severe in the placebo group vs the BCG group (Figure 4E Left panel). For 11 out of 12 symptoms there also was a higher percentage of patients in the placebo group versus BCG group (Figure 4E Right panel).

BCG recipients had comparable or milder infectious disease symptoms compared to their household members, whereas most placebo recipients had more severe symptoms compared to their household members

We on an exploratory basis studied infection disease severity of trial participants compared to non-diabetic adults living in the same household. We collected infectious disease symptom information for trial participants and for cohabitating adult partners in 20 households (13 BCG and 7 placebo) and determined the differences in Total Infectious Index for each household (Figure 5A, S3A). The data shows BCG recipients had comparable or milder symptoms as compared to their household members, whereas most placebo recipients had more severe disease as compared to their household members. The symptoms scores between participants and household members were compared between the BCG-treated group and the placebo-treated group using a Two-Sample Wilcoxon test ($p=0.049$, 2-tailed). The stacked horizontal bars in Figure 5B show the distributions of the infectious disease symptom scores in each group. BCG recipients overall had milder symptoms as compared to placebo recipients and even as compared to non-diabetic household member controls. Number at risk data are shown in Figure S4.

This data supports previously published data that type 1 diabetics not only have more severe COVID-19 but also have more severe and more infectious events disease events⁴⁹. Lastly, the distribution of symptoms in Figure 5B shows once again that for BCG-treated trial participants individual symptoms were minimized with vaccinations compared to placebo.

DISCUSSION

This randomized, double-blinded, placebo-controlled trial shows that multi-dose BCG vaccination is safe and prevents COVID-19 with an efficacy of 92% to 100% (depending on case definition) relative to placebo. This trial was conducted in the US in previously unvaccinated at risk type 1 diabetic subjects. BCG-vaccinated adults also had reduced incidence and severity of all infections. This randomized double blinded study now in a rigorous manner of formal testing and substantiates a large body of both epidemiological, observational and clinical trial evidence that BCG vaccines might in some settings provide a broad platform for infectious disease protection. This data is from a study conducted in the US, as a multi-dose BCG vaccine therapy

and administered two years prior to the pandemic to allow sufficient time for full effectiveness²⁻¹⁶.

This clinical trial has several strengths. First, this trial is, to our knowledge, the first peer-reviewed randomized double-blinded trial of multi-dose BCG for COVID-19 protection and infection protection in a US population. A prior trial of single-dose BCG, with immediate COVID-19 disease monitoring, showed neither protection from COVID-19 infections nor protection from disease severity⁷. This trial was likely too short in duration to find an effect based on the evidence from other off-target effects (see below) indicating years to show clinical efficacy. Second, our trial uses a very potent strain of BCG, Tokyo-172. BCG strain differences for other off-target indications are important and this strain of BCG exhibits some of the highest in vitro potency and is highly immunogenic⁵²⁻⁵⁷. Indeed it is now appreciated that Japan as a country with mandatory BCG vaccines and one of the oldest populations in the world has remarkable resistance to COVID-19⁵⁸. Third, the diabetic study population is high-risk for infections, suggesting that the vaccine is efficacious in populations susceptible to infections. Fourth, the study uses rigorous molecular methods to define a case of COVID-19 based on both PCR and/or SARS-CoV-2-directed immunoglobulin production to very specific regions of the virus to confirm current or past infection. Fifth, there was no patient attrition. Sixth, the subjects are from the US. This is important because all subjects, prior to enrollment, were confirmed by diagnostics and by history to be unexposed to tuberculosis and lacking prior BCG vaccinations. The US has never had a country policy of neonatal BCG vaccinations. Two properties of the vaccine are especially noteworthy. BCG's 100-year strong safety record and its international use as a neonatal vaccine should help to overcome vaccine hesitancy. Seventh, this trial was conducted in subjects who all had negative serology for prior COVID-19 infections and also had not yet received the approved Moderna and Pfizer vaccines that could confound the effect of BCGs protection alone. Finally, the BCG vaccine is affordable, which is especially important in the developing world where it offers almost immediate availability.

In conclusion, the BCG vaccine effectively protects against COVID-19 and provides broad infectious disease protection as now tested with a formal double blinded and randomized clinical trial. Also the BCG vaccine is safe, effective, affordable, and potentially protective against every changing viral variants of the COVID-19 pandemic, based on its broad-based protection against other infections.

Limitations of the Study

The most important limitation of our trial is that off-target effects take time to systemically manifest, but, once they do appear, they may offer broad-based infectious disease protection over the long-term. BCG does not work as fast as the antigen-specific COVID-19 vaccines and also likely requires multiple treatments over time to be effective, at least in BCG-naïve adults. Antigen-specific vaccines generally take weeks to show an effect although protection is limited by a specific strain and then downstream by short durability. In the case of the BCG vaccine, the off-target platform protection from infections has a slower onset (months to years) but offers perhaps life-long durability. The other off-target effects of BCG are in its reset of autoimmune diseases, benefits that take 2 years to show an effect¹⁸⁻²¹. Nonetheless, the benefits may last for decades thereafter as well, at least 8 years in randomized clinical

trials. Many of the epidemiologic studies show off-target protection after neonatal or adult vaccination, including one study showing >60 years of protection from a neonatal BCG vaccine^{19,59}. This “long immunity,” is both long to start and perhaps long-lasting. The slow onset of therapeutic effects and perhaps lifelong durability could be due to the gradual migration of the BCG organism from the vaccine injection site to the bone marrow, where it may infect resident stem cells, a process that is hastened by the IV administration of BCG^{19,60,61}. Longitudinal mechanistic data from our lab shows that BCG over time alters key metabolic and immune signaling pathways via methylation of genes over a 2-3 year time period⁶¹⁻⁶³. Others have shown that more acute changes are brought about by chemical modifications (methylation, acetylation, etc) of the histones in the promoters and enhancers of the genes.^{65,66} The slow reset of key immune genes by BCG-driven methylation and de-methylation of select host genes and in almost all lymphoid cell types such as both T cells and monocytes, shows this “long immunity” is multi-lineage. This could be due to possible stem cell driven re-modeling of the human immune system by this very synergistic organism. This randomized double blinded clinical trial documents in humans the broad infectious benefits of host microbe interactions.

Other potential limitations for this BCG study, as well as other studies that test COVID-19 vaccines in specialized patient populations, such as type 1 diabetic subjects, health care workers or the elderly, is that the translation of vaccine efficacy to the general public, in countries with diverse populations and different neonatal vaccination histories, may not always be applicable.

ACKNOWLEDGEMENTS

We thank all the participants who volunteered for this study with their dedication to continue to participate through the COVID-19 pandemic. We specifically thank Dr. Deneen Vojta for her insight and advocacy. We thank UnitedHealth Group for their insight to support this clinical trial. We also thank Dr. Miriam Davis for her editing of the manuscript with the highest of standards.

AUTHOR CONTRIBUTIONS

All authors met the criteria for authorship set by the International Committee of Medical Journal Editors. DF was the principal investigator and WK was the co-principal investigator of this randomized clinical trial. EH, NN, and GW were clinical trial coordinators and interacted with participants, gathered participant data and worked on formatting Figures with processed data. JB role was a registered nurse tracking vaccine side effects and seeing subjects. AL, AA, GS, LT, HT, HD performed various assays related to serum obtained from patients. HZ and DS performed the statistical analysis with the data being provided by WK. All authors had access to the blinded data. The data interpretation and data verification was performed at many levels but most by DF, DS, HZ, and WK. Authors DS, HZ and WK were unblinded subjects that processed the data; as outlined the original randomized trial is still active and ongoing. Blinded audits of data integrity and FDA compliance were performed by an outside monitoring

company (Advanced Clinical Inc) as well as blinded compliance audits once per week by EH, DF, GW, NN. All primary data will be shared at this time but is still blinded data since the primary outcome trial is still ongoing until approximately August 2023. All unblinded will be shared after the primary trial is completed with patient identifiers removed for HIPPA compliance.

DECLARATION OF INTERESTS

None of the authors have any ownership rights to the study drug, the Tokyo 174 strain of BCG. None of the authors consult or receive research support from Japan BCG Laboratory, the manufacturer and owner of the study drug. Funding for this trial was from non-profit sources and not provided by the drug owner. We thank UnitedHealth Group for their insight to support this clinical trial.

Inclusion and diversity statement

All subjects for eligibility were chosen based on non-bias selection for sex or select ethnic diversity.

FIGURE LEGENDS

Figure 1. Flow Diagram and Characteristics of Participants

This flow diagram represents all enrolled participants from January 1, 2020 to April, 2021 for this double-blinded randomized clinical trial testing repeat Tokyo-172 BCG vaccination vs placebo for COVID-19 protection. All 144 subjects were followed for 15 months with a 2:1 randomization and no drop-outs. Data collection for this trial ended on 4/20/21, the date when subjects started to receive provisionally approved COVID-19-specific vaccines. The geographical location of the participants within the US are shown in Figure S5.

Figure 2. BCG Vaccine Efficacy and Diagnostic Confirmation of COVID-19

(A) Shown is the cumulative incidence of confirmed COVID-19 as a primary endpoint. During the 15-month surveillance time, one BCG recipient out of 96 (1.0%) met our criteria for molecularly confirmed COVID-19. In contrast, 6 out of 48 placebo recipients met the criteria (12.5%). Fisher's Exact testing showed a significant difference (two-tailed $p=0.006$). Calculated vaccine efficacy was 92% and the posterior probability (vaccine efficacy $>30\%$) was 0.99. This was calculated using the Monte Carlo method. Vaccine efficacy was defined as $(p_1 - p_2) / p_1 \times 100$ where p_1 is the percentage COVID-positive subjects in the placebo group and p_2 is the percentage COVID-positive subjects in the BCG group. Our criteria for confirmed COVID-19 (see text) required a combination of COVID-19 symptom(s) and ≥ 5 of 10 positive antibody assays including PCR, if available. Since many current clinical trials only define confirmed COVID-19 by symptom(s) and positive PCR testing, the PCR-only group was studied separately for vaccine efficacy (Figure 2A and Figure 3B).

(B) Cumulative findings from each of the 10 diagnostic tests used to confirm COVID-19 (along with positive symptoms). These tests included the presence of COVID-19-specific antibodies to

various SARS-CoV-2 virus epitopes through protein display (I-VIII), antibodies to the receptor binding domain with an ELISA test (IX) and Point of Care testing (X) that included PCR. Our criteria for having confirmed COVID-19 required at least 5 of 10 detection methods to be positive, along with symptom(s). For the antibody assays, a patient was considered positive when the test resulted in a Z-score of ≥ 3 . In the cumulative graphs, the x-axis data shows the time-period of the 15-month trial. The Y-axis shows the cumulative percentage of positive subjects. Except for the point of care graph (X), all other graphs represent the percentage of BCG and placebo patients with a Z-score of ≥ 3 for the anti-SARS-CoV-2 antibody binding to a given protein region of the virus, i.e., the average antibody level during the COVID trial period was at least 3 standard deviations greater than the average level in the period preceding the COVID trial (baseline). The percentiles at the top-right of each graph represent the calculated vaccine efficacy if this test alone were used to diagnose COVID-19 disease. Respective efficacy and Fisher's Exact p values for each COVID-19 antibody test were as follows: (I) 100%, $p=0.0007$; (II) 80%, $p=0.089$; (III) 91.7%, $p=0.009$; (IV) 93.8%, $p=0.001$; (V) 90%, $p=0.024$; (VI) 87.5%, $p=0.004$; (VII) 94.4%, $p=0.0003$; (VIII) 83.3%, $p=0.009$, (IX) 90%, $p=0.009$; (X) 91.7%, $p=0.029$. For all graphs, BCG $n=96$, Placebo $n=48$. Figure S1 shows the viral protein regions for each anti-COVID antibody tested. Number at risk data for each cumulative graph are shown in Figure S4.

Figure 3. Reduced COVID-19 Disease Markers after BCG Vaccination

A. The heatmaps show Z-scores for antibodies against SARS-CoV-2 in BCG- and placebo-treated symptomatic subjects (BCG $n=26$, Placebo $n=21$). Since some of the Z-scores in the left map are faint, the right map shows which Z-scores are ≥ 3 . The Roman numerals at the bottom of each lane denote antibodies against SARS-CoV-2 protein regions as listed in Figure S1. The maximum Z-score in the left heat map was 126.

B. Cumulative incidence of confirmed COVID-19 defined by symptomatic subjects testing positive solely by PCR. The BCG group ($n=96$) had no symptomatic subjects who were PCR positive (0%), whereas the placebo group ($n=48$) had 5 symptomatic and PCR positive subjects (10.4%). This difference was significant (Fisher's Exact $p=0.0036$) and translated to a vaccine efficacy of 100% with 0.99 posterior probability. There was low availability of positive PCR tests at Point of Care locations during the first 7 months of the trial. This, together with the need to perform the PCR test in a narrow window of about two weeks to be positive, is the reason why we designed the 9 non-PCR methods shown in Figures 2A,B and 3A.

Figure 4. Cumulative Infections and Infection Severity

A. Cumulative total infectious diseases during the 15 months of surveillance. This cumulative figure shows all infections per patient, including all COVID-19 events, within the BCG group (blue) compared to the placebo group (red). Included are the infections for which multiple subject events were documented in both BCG and placebo groups. Comparison by means of a Poisson model yields a significant difference with $p=0.004$ (BCG $n=24$ out of 96 T1D total, Placebo $n=20$ out of 48 T1D total).

B. Cumulative infections for two different time periods: pre-COVID-19 pandemic (the 2.5 year period prior to this trial, i.e., the Pretrial) and during the COVID-19 pandemic (the Current Trial period of 15 months). The Pretrial time period was when all clinical trial subjects received their

≥ 3 BCG vaccines or placebo vaccines; the Current Trial was when the subjects were monitored during the 15-month observation during the COVID-19 pandemic (total patients BCG n=96, Pbo n=48). The lack of a statistical difference in the number of infections between BCG and placebo groups in the Pretrial period suggests that a longer length of time than 2.5 years is necessary to realize BCG's maximal infectious disease protection. It appears that, during the entire period of 15 months, prior BCG vaccinations were protecting from COVID-19 and other infections.

** $p < 0.01$

C. Infectious Disease Index for symptomatic patients. Symptomatic patients in the BCG-treated group had significantly reduced Total Infectious Disease Symptom Index (placebo 152 ± 70 (n=20) vs BCG 48 ± 11 (n= 31), $p = 0.04$, single tail and unpaired) as well as Average Infectious Disease Symptom Index (Placebo 23 ± 7 (n=20) and BCG 13 ± 2 (n=31), $p=0.04$, single tail and unpaired). We first calculated total and average symptom scores per patient and then calculated average and s.e.m. of each of these for BCG and placebo cohorts separately (* Student's T-test $p < 0.05$, 1-tailed, unpaired).

D. Patients in the BCG cohort reported significantly fewer days of missed work during infections as compared to the placebo group (* $p=0.02$). Missed work was reported by 7 out of 32 BCG patients and by 8 out of 17 Placebo patients

E. The number of patients that reported at least one symptom were 20 out of 48 in the Placebo group and 33 out of 96 in the BCG group. The placebo group had more severe average symptoms as compared to the BCG group for 12 out of 12 symptoms (Left panel). The number of patients in BCG and placebo groups that reported each symptom was then expressed (Right panel). For 11 out of 12 symptoms there was a higher percentage of symptomatic patients in the placebo group as compared to the BCG group. Statistical analysis by Student's T-test (1-tailed, unpaired, * $p < 0.05$).

Figure 5. Infection Symptoms of Trial Participants vs. Adult Household Members.

A. Infection symptoms in BCG and placebo groups compared to non-diabetic adult partners living in the same households. We collected surveys of symptoms of infectious diseases from all trial participants and household members of 13 BCG families and 7 placebo families. The BCG-treated trial participants had comparable or lower Total Infectious Symptoms Indexes as compared to their partners living in the same household, whereas most placebo-treated trial participants had more severe symptoms as compared to their partners. Statistical analysis of the differences by Two-sample Wilcoxon testing was significant (2-tailed; $p=0.049$; BCG n=13 and Placebo n=7). Left panel: XY-plot of Symptom Index of Trial Participants versus their Household Members. Right panel: the same data is also shown as a XY-plot of Household Members versus the difference of Trial Participants and their Household Members. This plot makes it easier to visualize which groups had milder or more severe disease by introducing positive and negative differences.

B. Distribution of individual infectious disease symptoms in BCG-, placebo-treated participants and infected household members across the four scoring possibilities (0 no symptoms; 1 mild; 2 moderate; 3 severe symptoms). Number at risk data are shown in Figure S4.

STAR★Methods

RESOURCE AVAILABILITY

Lead Contact

Further information and requests for resources and reagents should be directed to and will be fulfilled by the lead contact, Denise Faustman (dfaustman@mgh.harvard.edu)

Materials availability

This study did not generate new unique reagents.

Data and Code availability

Any additional information required to reanalyze the data reported in this paper is available from the lead contact upon request.

Additional Resources

This trial is listed on clinicaltrials.gov (<https://clinicaltrials.gov/ct2/show/NCT02081326>)

Key resources table

REAGENT or RESOURCE	SOURCE	IDENTIFIER
Antibodies		
Bacterial and virus strains		
BCG vaccine (Bacillus Calmette-Guérin)	Japan BCG Laboratory, Tokyo, Japan	N/A
Biological samples		
Chemicals, peptides, and recombinant proteins		

Critical commercial assays		
AntiCoV-ID™ IgG ELISA	Akston BioSciences, Beverly, MA	SKU: 600016
SARS-CoV-2 Protein Microarray: 2-in-1 protein and peptide assay	CDI Labs, Baltimore, MD. (http://cdi.bio)	CDICOV2-001.0
Point of Care SARS-CoV-2 testing (PCR, Rapid Antigen test, Antibody test)	Quest Diagnostics, Secaucus, NJ	N/A
Deposited data		
Experimental models: Cell lines		
Experimental models: Organisms/strains		
Oligonucleotides		
Recombinant DNA		
Software and algorithms		
StudyTrax Electronic Data Capture System for Clinical Research	StudyTrax, Macon, GA, USA	StudyTrax

Other		
BD Vacutainer Serum Blood Collection Tubes (Red Top)	Becton and Dickinson, Franklin Lakes, NJ	REF 366430
BD Vacutainer Push Button Blood Collection Set	Becton and Dickinson, Franklin Lakes, NJ	REF 367344

METHOD DETAILS

Study design and participants

We assessed the safety and efficacy of ≥ 3 BCG vaccinations (Tokyo-172 strain) versus placebo for prevention of COVID-19 and other infectious diseases in a community-based, single-center, Phase 2/3 randomized, double-blind, placebo-controlled clinical trial. The trial duration was 15 months, starting at the beginning of the SARS-CoV-2 pandemic in the US (01/01/2020) and ending with the US launch of COVID-19 vaccines in April 2021 (Fig. 1A). All participants only received the placebo or BCG vaccine and did not receive COVID-19 antigen specific vaccines. Clinical trial participants were volunteers ages 18-50 years old with a co-morbid condition, type 1 diabetes (Fig. 1B). The current trial was a parallel study using already enrolled double-blinded participants in a multi-dose BCG vaccine trial assessing its 5-year impact on other outcomes unrelated to infections (US FDA Investigational New Drug [IND]#16434; Massachusetts General Hospital [MGH] protocol #2013P002633). At the three-year time point of the original study, this parallel study on COVID-19 protection was initiated, while the original trial continued in a double-blinded fashion. The original clinical trial and this parallel clinical trial were pre-registered in the clinicaltrials.gov NCT site as: NCT02081326.

The protocol for the current COVID-19 prevention trial was approved as an amendment to the original FDA IND and MGH protocols as well as a new MGH protocol #2020P001462. A study synopsis is provided (Figure S6). The current trial and the original trial were performed in accordance with ethical principles that have their origin in the Declaration of Helsinki and are consistent with International Conference on Harmonization (ICH)/Good Clinical Practice, applicable regulatory requirements, and the MGH policy on Bioethics. Informed consent was written for the intervention; informed consent could be oral for the COVID-19 symptom surveys.

A total of 150 subjects were recruited for the original trial. All subjects were recruited with a requirement to have no previous or current tuberculosis and no history of BCG vaccinations, even during childhood. All subjects were US born and followed from the beginning of the original trial for all infection diseases (viral, bacterial, parasitic, etc) and any sort of antibiotic usage through a direct MedDra documentation system. The US has never offered newborn or childhood BCG vaccinations. The original trial recruited 150 subjects (2:1 BCG:placebo) and at the start of this COVID-19 trial two years later, 144 subjects were enrolled for this parallel trial design. The parallel infectious disease study design studied the off-target effects of repeat BCG vaccinations for COVID-19 and infectious disease protection (96 BCG

treated, 48 placebo treated). There was no patient attrition over the 15-month time course of the COVID-19 study. The original exclusion criteria included positive purified protein derivative (PPD) test, positive T-spot test for tuberculosis, or born in a foreign country with mandatory BCG vaccinations. The goal of these exclusion criteria was to prevent prior ongoing and durable protection from *Mycobacterium bovis* (the origin of the BCG vaccine) or *Mycobacterium tuberculosis* (TB) exposures causing long-term protection. Exclusion criteria also included no active glucocorticoids treatment, chronic immunosuppressive medications, or currently living with an immunosuppressed individual to prevent an adverse event from the administration of this live vaccine. All subjects lived within the United States (Figure S5). The largest contingent of participants, 36, was from Massachusetts, the second largest, 16, was from New York, and the next largest, 11, was from Texas. During this time in the US for this COVID-19 study (January 2020 - April 2021) the Delta variant was identified in May 2021 so this study addresses BCG protection from all infectious diseases and resistance to predominately the Alpha variant of the SARS-CoV-2 pandemic. Importantly both the diagnostic PCR testing and serology testing performed to confirm COVID-19 disease, detected all genetic variants of the virus.

This trial had three types of oversight. At 6-month intervals, this trial had audits from either Massachusetts General Brigham (MGB) Division of Quality Management or from outside auditors (Advanced Clinical Trials, Deerfield, IL). All trial data was processed by two unblinded statisticians (D.S., H.Z.), and an independent data and safety monitoring board (DSMB) met at 6-month intervals to monitor subject safety and reporting compliance.

The MGH Research Pharmacy generated the randomization code for the administration to study participants of either the BCG or the saline placebo vaccine. This randomization code was held in the MGH pharmacy. All drug within the syringe had an identical appearing fluid for the BCG and placebo vaccine in the 0.1cc volume. With this vaccine there are absolutely no systemic symptoms after administration so blinding of study staff and also subjects collecting post-vaccine adverse systemic events is easier than antigen specific vaccines that frequently yield multi-day systemic reactions and sometimes missed workdays. A separate third party study nurse collected systemic reactions to the vaccine (none reported) and also consulted with participants for any skin reactions. Skin reactions were kept in separate locked storage center and not within the Studytrax or EPIC data management center. All investigators and study staff remained blinded when studying both the primary and parallel study outcomes of COVID-19 and infectious diseases. Subject and staff unblinding will occur at the end of the primary study.

Procedures

The BCG vaccine or saline placebo (both 0.1ml volume per dose) was administered intradermally over a period of 2.5 to 3 years prior to the start of this parallel trial. Two BCG doses were given 4 weeks apart in the beginning of year 1, and an identical booster dose was given in year 2. Site staff were responsible for reporting all drug- and non-drug-related safety information and were unaware of group assignments.

Monitoring for COVID-19 or infectious disease over the 15-month surveillance period included emailed surveys (every 2 months), as well as surveys during every visit to our clinic. The survey asked about COVID-19 and any other infections subjects had over the previous three months. It was completed by the patient via email, over the phone with research staff at the 6 month visit time or online through Studytrax. Studytrax is an FDA compliant electronic data

capture system for clinical research. At each 6-month clinic visit 10 ml of blood was drawn. The survey was also completed by the patient for any adult household member with infectious symptoms. Participants also directly reached out to the clinic to report infections. Household members' blood for confirmation of SARS-CoV-2 infection was locally obtained by a national based chain of blood drawing centers (Quest Diagnostics, Secaucus, NJ). The symptoms questionnaire for study participants and infected household members was in compliance with FDA Guidance for Industry⁵¹. For each symptom, the participants provided a severity score of 0 (none), 1 (mild), 2 (moderate) or 3 (severe). The length of the infectious illness in days was also reported. From the individual symptom scores a Total Symptom Score and an Average Symptom Score were tabulated. Then, multiplying by the length of illness, the Total Infectious Symptom Index or the Average Infectious Symptom Index was assessed (Figure S3A).

For SARS-CoV-2 antibodies detected, the average and standard deviation of antibody levels prior to the onset of COVID-19 pandemic (Pre-2020) was determined. The average of the levels after the start of the pandemic (2020 and 2021 data) was also calculated. Using these averages and the Pre-2020 standard deviation the Z-score per patient was then calculated. The Z-score thus represents the difference in average pre-COVID and average COVID signal levels, expressed as the number of standard deviations of pre-COVID. A Z-score of ≥ 3 was considered to represent a statistically significant difference.

Outcomes

This trial had the following co-primary efficacy endpoints on potential benefits of multi-dose BCG: prevention of symptomatic and molecularly-confirmed COVID-19 (see case criteria below); and reduction of infectious disease (including COVID-19) symptomatology and severity by the Total or Average Infectious Disease Index. The study synopsis is provided (Figure S6). These outcomes conformed to other primary US based trials for the antigen-specific vaccines (Pfizer-BioNTech and Moderna trials). Secondary outcomes were average workdays missed, and individual infection symptom severity, and household members' total infectious symptom index.

COVID-19 is defined according to FDA by the presence of at least one of 12 symptoms⁵¹ (headache, chills/shivering, diarrhea, nausea/vomiting, fatigue, shortness of breath, loss of smell or taste, muscle aches, nasal congestion, cough, sore throat and fever) and molecular confirmation. These symptoms, other than the loss of smell and taste, are symptoms of most infectious diseases, so the survey was used for both purposes.

Our criteria for symptomatic and molecularly confirmed COVID-19 had to be rigorous while overcoming the problem that PCR testing was not available at the origin of this trial and/or not equally accessible in all parts of the US. PCR testing only became widely available seven months into the trial. In addition, PCR detects SARS-CoV-2 virus in a smaller time window than molecular antibody confirmation through the measurement of host direct SARS-CoV-2 antibodies. Therefore for symptomatic and molecularly confirmed COVID-19 we required subjects to exhibit one or more FDA-defined symptoms of COVID-19¹ together with positive findings on ≥ 5 out of 10 assays (9 SARS-CoV-2 IgG antibody binding assays and a tenth assay that included PCR testing for viral RNA) (Figure S1). A subject was deemed positive for a particular SARS-CoV-2 antibody assay if the serology antibody Z-score was ≥ 3 , i.e., at least 3

standard deviations higher than during the pre-COVID period (baseline). Serum was obtained in all cases within 3 months of the infection for the detection of IgG antibodies.

Statistical Analysis

The sample size and power analysis of this trial were based on the primary randomized Phase II clinical trial that started 2-3 years prior to this parallel trial focusing on COVID-19. Vaccine efficacy is defined by $(p_1 - p_2)/p_1 \times 100$, where p_1 is the % Covid-positive in the placebo group and p_2 is the % Covid-positive in the BCG group. For comparison to published Covid vaccine trials such as the mRNA trials, we also calculated the posterior probability that the vaccine efficacy is greater than 30% using a Bayesian Beta binomial model fitted using WinBUGS⁶⁷. We used a non-informative beta prior with parameters (1,1) and took 5000 MCMC samples to compute the posterior probability for efficacy to be greater than 30%. The 95% credible interval for the posterior probability for efficacy to be >30% is 98.9-100%. Further details are provided in the Figure legends and these method mirror past studies on COVID-19 vaccine efficacy⁶⁸. Average antibody levels were compared using Student's T-testing in Prism (Graphpad Software, San Diego, CA) or Microsoft Excel. The number of patients positive in the BCG versus the Placebo cohort were compared using Fisher's Exact Test (available online at <https://www.graphpad.com/quickcalcs/contingency1/>). Differences in the symptoms scores between participants and household members were compared between the BCG-treated group and the placebo-treated group using a Two-Sample Wilcoxon test. Statistics were considered significant at $p < 0.05$.

This trial is registered as ClinicalTrials.gov number, NCT 16434

References

1. Anonymous (2018). BCG Vaccines: WHO position paper. *Relev Epidemiol Hebd*.
2. Aaby, P., Roth, A., Ravn, H., Napirna, B.M., Rodrigues, A., Lisse, I.M., Stensballe, L., Diness, B.R., Lausch, K.R., Lund, N., et al. (2011). Randomized trial of BCG vaccination at birth to low-birth-weight children: beneficial nonspecific effects in the neonatal period? *J Infect Dis* 204, 245-252. 10.1093/infdis/jir240.
3. Biering-Sorensen, S., Aaby, P., Lund, N., Monteiro, I., Jensen, K.J., Eriksen, H.B., Schaltz-Buchholzer, F., Jorgensen, A.S.P., Rodrigues, A., Fisker, A.B., and Benn, C.S. (2017). Early BCG-Denmark and Neonatal Mortality Among Infants Weighing <2500 g: A Randomized Controlled Trial. *Clin Infect Dis* 65, 1183-1190. 10.1093/cid/cix525.

4. Biering-Sorensen, S., Aaby, P., Napirna, B.M., Roth, A., Ravn, H., Rodrigues, A., Whittle, H., and Benn, C.S. (2012). Small randomized trial among low-birth-weight children receiving bacillus Calmette-Guerin vaccination at first health center contact. *Pediatr Infect Dis J* 31, 306-308. 10.1097/INF.0b013e3182458289.
5. de Castro, M.J., Pardo-Seco, J., and Martinon-Torres, F. (2015). Nonspecific (Heterologous) Protection of Neonatal BCG Vaccination Against Hospitalization Due to Respiratory Infection and Sepsis. *Clin Infect Dis* 60, 1611-1619. 10.1093/cid/civ144.
6. Garly, M.L., Martins, C.L., Bale, C., Balde, M.A., Hedegaard, K.L., Gustafson, P., Lisse, I.M., Whittle, H.C., and Aaby, P. (2003). BCG scar and positive tuberculin reaction associated with reduced child mortality in West Africa. A non-specific beneficial effect of BCG? *Vaccine* 21, 2782-2790. 10.1016/s0264-410x(03)00181-6.
7. Giamarellos-Bourboulis, E.J., Tsilika, M., Moorlag, S., Antonakos, N., Kotsaki, A., Dominguez-Andres, J., Kyriazopoulou, E., Gkavogianni, T., Adami, M.E., Damoraki, G., et al. (2020). Activate: Randomized Clinical Trial of BCG Vaccination against Infection in the Elderly. *Cell* 183, 315-323 e319. 10.1016/j.cell.2020.08.051.
8. Hawkrige, A., Hatherill, M., Little, F., Goetz, M.A., Barker, L., Mahomed, H., Sadoff, J., Hanekom, W., Geiter, L., Hussey, G., and South African, B.C.G.t.t. (2008). Efficacy of percutaneous versus intradermal BCG in the prevention of tuberculosis in South African infants: randomised trial. *BMJ* 337, a2052. 10.1136/bmj.a2052.
9. Kristensen, I., Aaby, P., and Jensen, H. (2000). Routine vaccinations and child survival: follow up study in Guinea-Bissau, West Africa. *BMJ* 321, 1435-1438. 10.1136/bmj.321.7274.1435.
10. Nemes, E., Geldenhuys, H., Rozot, V., Rutkowski, K.T., Ratangee, F., Bilek, N., Mabwe, S., Makhetha, L., Erasmus, M., Toefy, A., et al. (2018). Prevention of M. tuberculosis Infection with H4:IC31 Vaccine or BCG Revaccination. *N Engl J Med* 379, 138-149. 10.1056/NEJMoa1714021.
11. Ponnighaus, J.M., Fine, P.E., Sterne, J.A., Wilson, R.J., Msosa, E., Gruer, P.J., Jenkins, P.A., Lucas, S.B., Liomba, N.G., and Bliss, L. (1992). Efficacy of BCG vaccine against leprosy and tuberculosis in northern Malawi. *Lancet* 339, 636-639. 10.1016/0140-6736(92)90794-4.
12. Roth, A., Gustafson, P., Nhaga, A., Djana, Q., Poulsen, A., Garly, M.L., Jensen, H., Sodemann, M., Rodrigues, A., and Aaby, P. (2005). BCG vaccination scar associated with better childhood survival in Guinea-Bissau. *Int J Epidemiol* 34, 540-547. 10.1093/ije/dyh392.
13. Shann, F. (2010). The non-specific effects of vaccines. *Arch Dis Child* 95, 662-667. 10.1136/adc.2009.157537.
14. Stensballe, L.G., Nante, E., Jensen, I.P., Kofoed, P.E., Poulsen, A., Jensen, H., Newport, M., Marchant, A., and Aaby, P. (2005). Acute lower respiratory tract infections and respiratory syncytial virus in infants in Guinea-Bissau: a beneficial effect of BCG vaccination for girls community based case-control study. *Vaccine* 23, 1251-1257. 10.1016/j.vaccine.2004.09.006.
15. Walk, J., de Bree, L.C.J., Graumans, W., Stoter, R., van Gemert, G.J., van de Vegte-Bolmer, M., Teelen, K., Hermsen, C.C., Arts, R.J.W., Behet, M.C., et al. (2019). Outcomes of controlled human malaria infection after BCG vaccination. *Nat Commun* 10, 874. 10.1038/s41467-019-08659-3.

16. Wardhana, Datau, E.A., Sultana, A., Mandang, V.V., and Jim, E. (2011). The efficacy of Bacillus Calmette-Guerin vaccinations for the prevention of acute upper respiratory tract infection in the elderly. *Acta Med Indones* 43, 185-190.
17. Calmette, A. (1931). Preventive vaccination against tuberculosis with BCG. *Proc R Soc Med* 24, 1481-1490.
18. Faustman, D.L., Wang, L., Okubo, Y., Burger, D., Ban, L., Man, G., Zheng, H., Schoenfeld, D., Pompei, R., Avruch, J., and Nathan, D.M. (2012). Proof-of-concept, randomized, controlled clinical trial of Bacillus-Calmette-Guerin for treatment of long-term type 1 diabetes. *PLoS One* 7, e41756. 10.1371/journal.pone.0041756.
19. Kuhlreiber, W.M., Tran, L., Kim, T., Dybala, M., Nguyen, B., Plager, S., Huang, D., Janes, S., Defusco, A., Baum, D., et al. (2018). Long-term reduction in hyperglycemia in advanced type 1 diabetes: the value of induced aerobic glycolysis with BCG vaccinations. *NPJ Vaccines* 3, 23. 10.1038/s41541-018-0062-8.
20. Paolillo, A., Buzzi, M.G., Giugni, E., Sabatini, U., Bastianello, S., Pozzilli, C., Salvetti, M., and Ristori, G. (2003). The effect of Bacille Calmette-Guerin on the evolution of new enhancing lesions to hypointense T1 lesions in relapsing remitting MS. *J Neurol* 250, 247-248. 10.1007/s00415-003-0967-6.
21. Ristori, G., Buzzi, M.G., Sabatini, U., Giugni, E., Bastianello, S., Viselli, F., Buttinelli, C., Ruggieri, S., Colonnese, C., Pozzilli, C., and Salvetti, M. (1999). Use of Bacille Calmette-Guerin (BCG) in multiple sclerosis. *Neurology* 53, 1588-1589.
22. Bagheri, N., and Montazeri, H. (2021). On BCG Vaccine Protection from COVID-19: A Review. *SN Compr Clin Med*, 1-11. 10.1007/s42399-021-00835-1.
23. Curtis, N., Sparrow, A., Ghebreyesus, T.A., and Netea, M.G. (2020). Considering BCG vaccination to reduce the impact of COVID-19. *Lancet* 395, 1545-1546. 10.1016/S0140-6736(20)31025-4.
24. Escobar, C.E. (2020). Correction for Escobar et al., BCG vaccine protection from severe coronavirus disease 2019 (COVID-19). *Proc Natl Acad Sci U S A* 117, 27741-27742. 10.1073/pnas.2019438117.
25. Klinger, D., Blass, I., Rappoport, N., and Linial, M. (2020). Significantly Improved COVID-19 Outcomes in Countries with Higher BCG Vaccination Coverage: A Multivariable Analysis. *Vaccines (Basel)* 8. 10.3390/vaccines8030378.
26. Moorlag, S., van Deuren, R.C., van Werkhoven, C.H., Jaeger, M., Debisarun, P., Taks, E., Mourits, V.P., Koeken, V., de Bree, L.C.J., Ten Doesschate, T., et al. (2020). Safety and COVID-19 Symptoms in Individuals Recently Vaccinated with BCG: a Retrospective Cohort Study. *Cell Rep Med* 1, 100073. 10.1016/j.xcrm.2020.100073.
27. Rivas, M.N., Ebinger, J.E., Wu, M., Sun, N., Braun, J., Sobhani, K., Van Eyk, J.E., Cheng, S., and Arditi, M. (2021). BCG vaccination history associates with decreased SARS-CoV-2 seroprevalence across a diverse cohort of health care workers. *Journal of Clinical Investigation* 131. 10.1172/JCI145157.
28. Wickramasinghe, D., Wickramasinghe, N., Kamburugamuwa, S., Arambepola, C., and Samarasekera, D. (2020). Correlation between immunity from BCG and the morbidity and mortality of COVID-19. *Trop Dis Travel Med Vaccines* 5, 17. 10.1186/s40794-020-00117-z.

29. Berg, M.K., Yu, Q., Salvador, C.E., Melani, I., and Kitayama, S. (2020). Mandated Bacillus Calmette-Guerin (BCG) vaccination predicts flattened curves for the spread of COVID-19. *Sci Adv* 6, eabc1463. 10.1126/sciadv.abc1463.
30. Joy, M., Malavika, B., Asirvatham, E.S., Sudarsanam, T.D., and Jeyaseelan, L. (2021). Is BCG associated with reduced incidence of COVID-19? A meta-regression of global data from 160 countries. *Clin Epidemiol Glob Health* 9, 202-203. 10.1016/j.cegh.2020.08.015.
31. Kinoshita, M., and Tanaka, M. (2020). Impact of Routine Infant BCG Vaccination on COVID-19. *J Infect* 81, 625-633. 10.1016/j.jinf.2020.08.013.
32. Hauer, J., Fischer, U., Auer, F., and Borkhardt, A. (2020). Regional BCG vaccination policy in former East- and West Germany may impact on both severity of SARS-CoV-2 and incidence of childhood leukemia. *Leukemia* 34, 2217-2219. 10.1038/s41375-020-0871-4.
33. Gursel, M., and Gursel, I. (2020). Is global BCG vaccination-induced trained immunity relevant to the progression of SARS-CoV-2 pandemic? *Allergy* 75, 1815-1819. 10.1111/all.14345.
34. Brooks, N.A., Puri, A., Garg, S., Nag, S., Corbo, J., Turabi, A.E., Kaka, N., Zimmel, R.W., Hegarty, P.K., and Kamat, A.M. (2021). The association of Coronavirus Disease-19 mortality and prior bacille Calmette-Guerin vaccination: a robust ecological analysis using unsupervised machine learning. *Sci Rep* 11, 774. 10.1038/s41598-020-80787-z.
35. Samrah, S.M., Al-Mistarehi, A.W., Ibnian, A.M., Raffee, L.A., Momany, S.M., Al-Ali, M., Hayajneh, W.A., Yusef, D.H., Awad, S.M., and Khassawneh, B.Y. (2020). COVID-19 outbreak in Jordan: Epidemiological features, clinical characteristics, and laboratory findings. *Ann Med Surg (Lond)* 57, 103-108. 10.1016/j.amsu.2020.07.020.
36. Ozdemir, C., Kucuksezer, U.C., and Tamay, Z.U. (2020). Is BCG vaccination affecting the spread and severity of COVID-19? *Allergy* 75, 1824-1827. 10.1111/all.14344.
37. Kumar, A., Misra, S., Verma, V., Vishwakarma, R.K., Kamal, V.K., Nath, M., Prakash, K., Upadhyay, A.D., and Sahu, J.K. (2020). Global impact of environmental temperature and BCG vaccination coverage on the transmissibility and fatality rate of COVID-19. *PLoS One* 15, e0240710. 10.1371/journal.pone.0240710.
38. Upton, C.M., van Wijk, R.C., Mockeliunas, L., Simonsson, U.S.H., McHarry, K., van den Hoogen, G., Muller, C., von Delft, A., van der Westhuizen, H.M., van Crevel, R., et al. (2022). Safety and efficacy of BCG re-vaccination in relation to COVID-19 morbidity in healthcare workers: A double-blind, randomised, controlled, phase 3 trial. *EClinicalMedicine* 48, 101414. 10.1016/j.eclinm.2022.101414.
39. Moorlag, S., Taks, E., Ten Doesschate, T., van der Vaart, T.W., Janssen, A.B., Muller, L., Ostermann, P., Dijkstra, H., Lemmers, H., Simonetti, E., et al. (2022). Efficacy of Bacillus Calmette-Guerin vaccination against respiratory tract infections in the elderly during the Covid-19 pandemic. *Clin Infect Dis*. 10.1093/cid/ciac182.
40. Li, W.X. (2021). Worldwide inverse correlation between Bacille Calmette-Guerin (BCG) immunization and COVID-19 mortality. *Infection* 49, 463-473. 10.1007/s15010-020-01566-6.
41. Pepin, J., Labbe, A.C., Carignan, A., Parent, M.E., Yu, J., Grenier, C., Beauchemin, S., De Wals, P., Valiquette, L., and Rousseau, M.C. (2021). Does BCG provide long-term protection against SARS-CoV-2 infection? A case-control study in Quebec, Canada. *Vaccine* 39, 7300-7307. 10.1016/j.vaccine.2021.08.019.

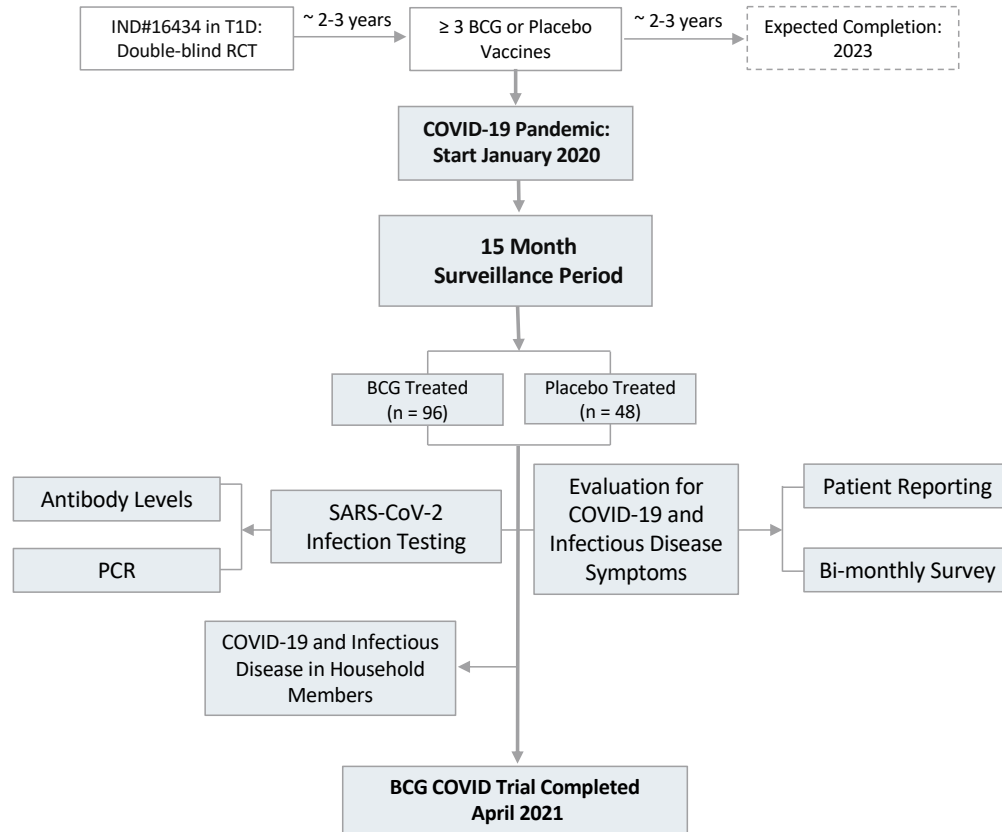
42. de Chaisemartin, C., and de Chaisemartin, L. (2020). BCG vaccination in infancy does not protect against COVID-19. Evidence from a natural experiment in Sweden. *Public Health Emergency Collection*. Oxford University Press.
43. Hensel, J., McAndrews, K.M., McGrail, D.J., Dowlatshahi, D.P., LeBleu, V.S., and Kalluri, R. (2020). Protection against SARS-CoV-2 by BCG vaccination is not supported by epidemiological analyses. *Sci Rep* 10, 18377. 10.1038/s41598-020-75491-x.
44. Hamiel, U., Kozer, E., and Youngster, I. (2020). SARS-CoV-2 Rates in BCG-Vaccinated and Unvaccinated Young Adults. *JAMA* 323, 2340-2341. 10.1001/jama.2020.8189.
45. Bates, M.N., Herron, T.J., Lwi, S.J., and Baldo, J.V. (2022). BCG vaccination at birth and COVID-19: a case-control study among U.S. military Veterans. *Hum Vaccin Immunother* 18, 1981084. 10.1080/21645515.2021.1981084.
46. Su, W.J., Chang, C.H., Wang, J.L., Chen, S.F., and Yang, C.H. (2021). COVID-19 Severity and Neonatal BCG Vaccination among Young Population in Taiwan. *Int J Environ Res Public Health* 18. 10.3390/ijerph18084303.
47. Amirlak, L., Haddad, R., Hardy, J.D., Khaled, N.S., Chung, M.H., and Amirlak, B. (2021). Effectiveness of booster BCG vaccination in preventing Covid-19 infection. *Hum Vaccin Immunother* 17, 3913-3915. 10.1080/21645515.2021.1956228.
48. Carey, I.M., Critchley, J.A., DeWilde, S., Harris, T., Hosking, F.J., and Cook, D.G. (2018). Risk of Infection in Type 1 and Type 2 Diabetes Compared With the General Population: A Matched Cohort Study. *Diabetes Care* 41, 513-521. 10.2337/dc17-2131.
49. Barrett, C.E., Park, J., Kompaniyets, L., Baggs, J., Cheng, Y.J., Zhang, P., Imperatore, G., and Pavkov, M.E. (2021). Intensive Care Unit Admission, Mechanical Ventilation, and Mortality Among Patients With Type 1 Diabetes Hospitalized for COVID-19 in the U.S. *Diabetes Care* 44, 1788-1796. 10.2337/dc21-0604.
50. Moorlag, S., Arts, R.J.W., van Crevel, R., and Netea, M.G. (2019). Non-specific effects of BCG vaccine on viral infections. *Clin Microbiol Infect* 25, 1473-1478. 10.1016/j.cmi.2019.04.020.
51. FDA (2020). Assessing COVID-19 related symptoms in outpatient adult and adolescent subjects in clinical trials of drugs and biological products for COVID-19 prevention or treatment. Guidance for Industry. In FDA, ed. Center for Biologics Evaluation and Research Center for Drug Evaluation and Research.
52. Abdallah, M., Mahgoub, A., Ahmed, H., and Chaterji, S. (2020). Author Correction: Athena: Automated Tuning of k-mer based Genomic Error Correction Algorithms using Language Models. *Sci Rep* 10, 2390. 10.1038/s41598-020-59141-w.
53. Angelidou, A., Conti, M.G., Diray-Arce, J., Benn, C.S., Shann, F., Netea, M.G., Liu, M., Potluri, L.P., Sanchez-Schmitz, G., Husson, R., et al. (2020). Licensed Bacille Calmette-Guerin (BCG) formulations differ markedly in bacterial viability, RNA content and innate immune activation. *Vaccine* 38, 2229-2240. 10.1016/j.vaccine.2019.11.060.
54. Hayashi, D., Takii, T., Fujiwara, N., Fujita, Y., Yano, I., Yamamoto, S., Kondo, M., Yasuda, E., Inagaki, E., Kanai, K., et al. (2009). Comparable studies of immunostimulating activities in vitro among *Mycobacterium bovis* bacillus Calmette-Guerin (BCG) substrains. *FEMS Immunol Med Microbiol* 56, 116-128. 10.1111/j.1574-695X.2009.00559.x.

55. Rentsch, C.A., Birkhauser, F.D., Biot, C., Gsponer, J.R., Bisiaux, A., Wetterauer, C., Lagranderie, M., Marchal, G., Orgeur, M., Bouchier, C., et al. (2014). Bacillus Calmette-Guerin strain differences have an impact on clinical outcome in bladder cancer immunotherapy. *Eur Urol* 66, 677-688. 10.1016/j.eururo.2014.02.061.
56. Ritz, N., Dutta, B., Donath, S., Casalaz, D., Connell, T.G., Tebruegge, M., Robins-Browne, R., Hanekom, W.A., Britton, W.J., and Curtis, N. (2012). The influence of bacille Calmette-Guerin vaccine strain on the immune response against tuberculosis: a randomized trial. *Am J Respir Crit Care Med* 185, 213-222. 10.1164/rccm.201104-0714OC.
57. Shann, F. (2015). Editorial Commentary: Different Strains of Bacillus Calmette-Guerin Vaccine Have Very Different Effects on Tuberculosis and on Unrelated Infections. *Clin Infect Dis* 61, 960-962. 10.1093/cid/civ454.
58. Roser, M. (2022). Our World of Data. Covid-19 data explorer. <https://ourworldindata.org/explorers/coronavirus-data-explorer>
59. Aronson, N.E., Santosham, M., Comstock, G.W., Howard, R.S., Moulton, L.H., Rhoades, E.R., and Harrison, L.H. (2004). Long-term efficacy of BCG vaccine in American Indians and Alaska Natives: A 60-year follow-up study. *JAMA* 291, 2086-2091. 10.1001/jama.291.17.2086.
60. Cirovic, B., de Bree, L.C.J., Groh, L., Blok, B.A., Chan, J., van der Velden, W., Bremmers, M.E.J., van Crevel, R., Handler, K., Picelli, S., et al. (2020). BCG Vaccination in Humans Elicits Trained Immunity via the Hematopoietic Progenitor Compartment. *Cell Host Microbe* 28, 322-334 e325. 10.1016/j.chom.2020.05.014.
61. Darrah, P.A., Zeppa, J.J., Maiello, P., Hackney, J.A., Wadsworth, M.H., 2nd, Hughes, T.K., Pokkali, S., Swanson, P.A., 2nd, Grant, N.L., Rodgers, M.A., et al. (2020). Prevention of tuberculosis in macaques after intravenous BCG immunization. *Nature* 577, 95-102. 10.1038/s41586-019-1817-8.
62. Keefe, R.C., Takahashi, H., Tran, L., Nelson, K., Ng, N., Kuhlreiber, W.M., and Faustman, D.L. (2021). BCG therapy is associated with long-term, durable induction of Treg signature genes by epigenetic modulation. *Sci Rep* 11, 14933. 10.1038/s41598-021-94529-2.
63. Dias, H.F., Kuhlreiber, W.M., Nelson, K.J., Ng, N.C., Zheng, H., and Faustman, D.L. (2021). Epigenetic changes related to glucose metabolism in type 1 diabetes after BCG vaccinations: A vital role for KDM2B. *Vaccine*. 10.1016/j.vaccine.2021.04.011.
64. Kuhlreiber, W.M., Takahashi, H., Keefe, R.C., Song, Y., Tran, L., Luck, T.G., Shpilsky, G., Moore, L., Sinton, S.M., Graham, J.C., and Faustman, D.L. (2020). BCG Vaccinations Upregulate Myc, a Central Switch for Improved Glucose Metabolism in Diabetes. *iScience* 23, 101085. 10.1016/j.isci.2020.101085.
65. van der Heijden, C., Noz, M.P., Joosten, L.A.B., Netea, M.G., Riksen, N.P., and Keating, S.T. (2018). Epigenetics and Trained Immunity. *Antioxid Redox Signal* 29, 1023-1040. 10.1089/ars.2017.7310.
66. Fanucchi, S., Dominguez-Andres, J., Joosten, L.A.B., Netea, M.G., and Mhlanga, M.M. (2021). The Intersection of Epigenetics and Metabolism in Trained Immunity. *Immunity* 54, 32-43. 10.1016/j.immuni.2020.10.011.

67. Lunn, D.J., Thomas, A., Best, N., and Spiegelhalter, D. (2000). WinBugs — A Bayesian modelling framework: Concepts, structure, and extensibility. *Statistics and Computing* *10*, 325-337.
68. Polack, FP, Thomas, SJ, et al. Safety and Efficacy of the BNT162b2 mRNA Covid-19 Vaccine. (2020) *NEJM* Vol 383, 2603-15.

Figure 1.

A Study Diagram



B Characteristics of Participants

	BCG (N = 96)	Placebo (N= 48)	Total (N = 144)
Sex – no. (%)			
Male	55 (38.2)	29 (20.1)	84 (58.3)
Female	41 (28.5)	19 (13.2)	60 (41.7)
Country – no. (%)			
United States	96 (66.7)	48 (33.3)	144 (100)
Current Age – yr			
Average (Median)	44.5 ± 1.3 (43.1)	43.6 ± 1.9 (40.7)	43.8 ± 1.1 (42)
Age at Baseline Injection – yr			
Average (Median)	39.3 ± 1.3 (38)	38.4 ± 1.9 (35.5)	39 ± 1.0 (37)
Age of Diabetes Onset – yr			
Average (Median)	26.8 ± 1.2 (26.3)	25.1 ± 1.9 (23.4)	25.8 ± 1.0 (25)
Duration of Diabetes – yr			
Average (Median)	17.7 ± 0.7 (17)	18.6 ± 1.0 (16.5)	18 ± 0.6 (17)

Figure 2.

A BCG Efficacy Against Symptomatic COVID-19

	BCG (n=96)	Placebo (n=48)	Surveillance time (months)	Vaccine Efficacy	Posterior Probability (Vaccine Efficacy >30%)
COVID-19 confirmed by Point of Care and SARS-CoV-2 Antibodies	1 (1.0%)	6 (12.5%)	15	92%	0.99
COVID-19 confirmed by PCR only	0 (0.0%)	5 (10.4%)	15	100%	0.99

B Diagnostics Used to Confirm COVID-19 Infections

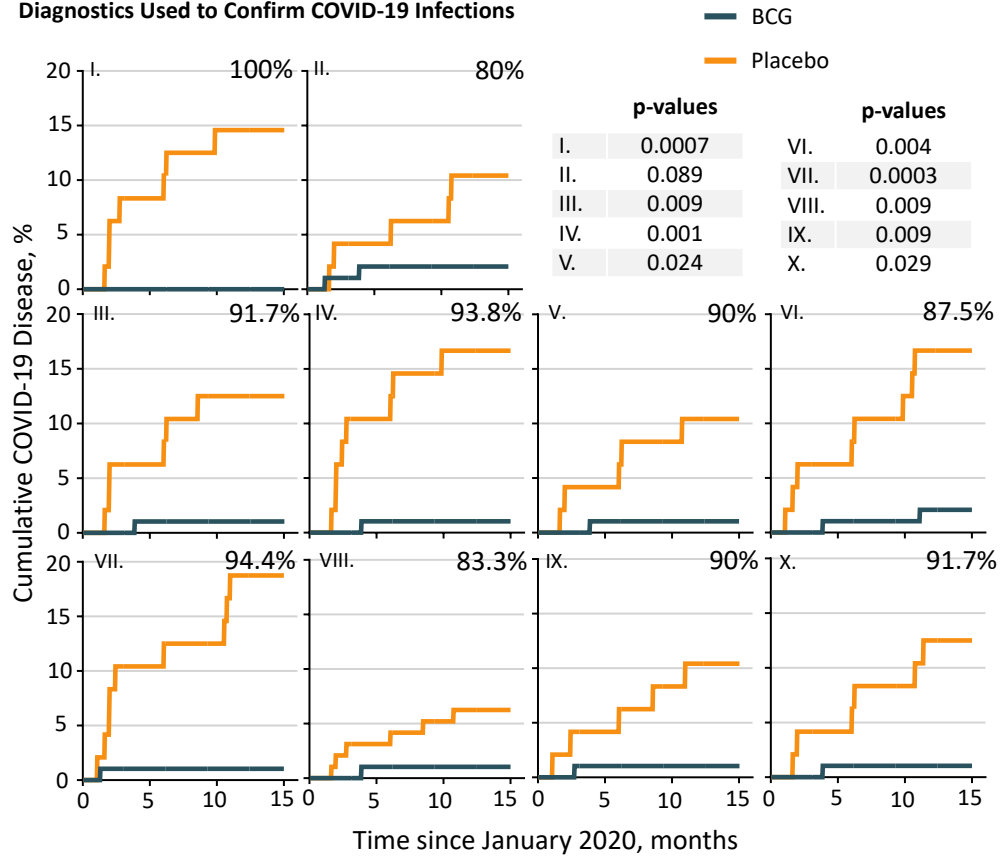
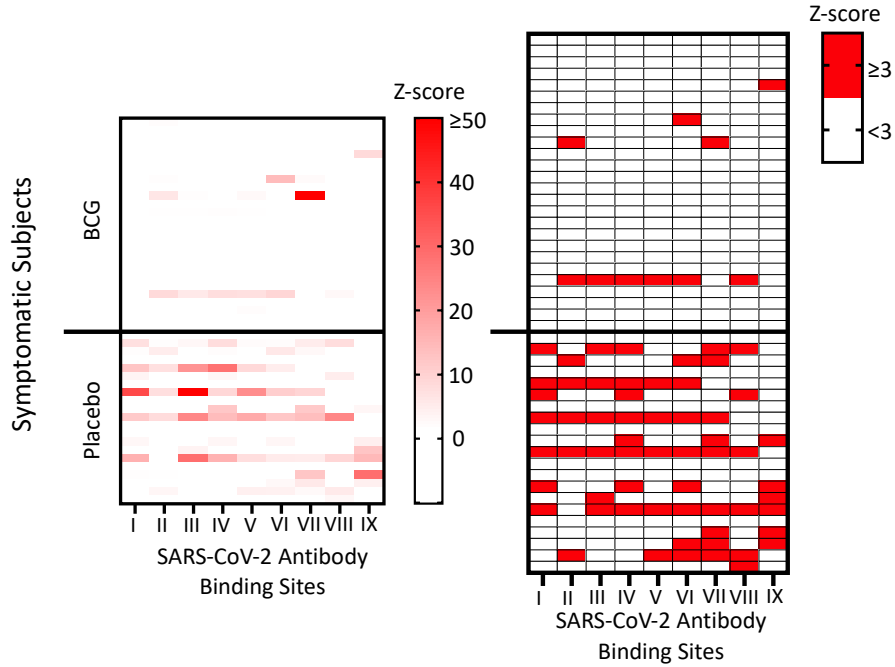


Figure 3.

A Change in antibody levels for subjects reporting COVID-like symptoms (Z-scores)



B COVID-19 confirmed by RT-PCR only

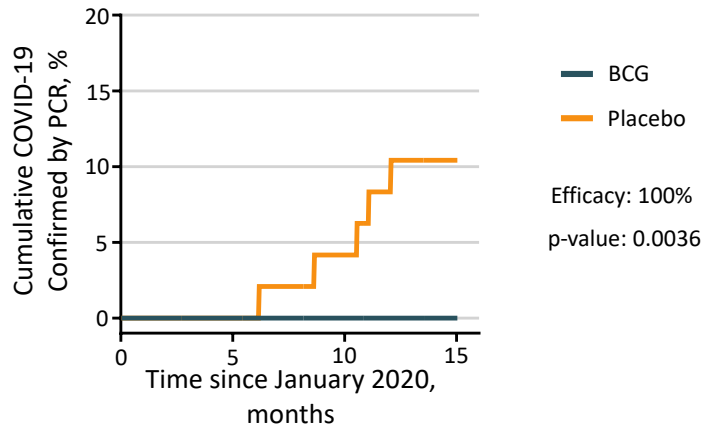


Figure 4.

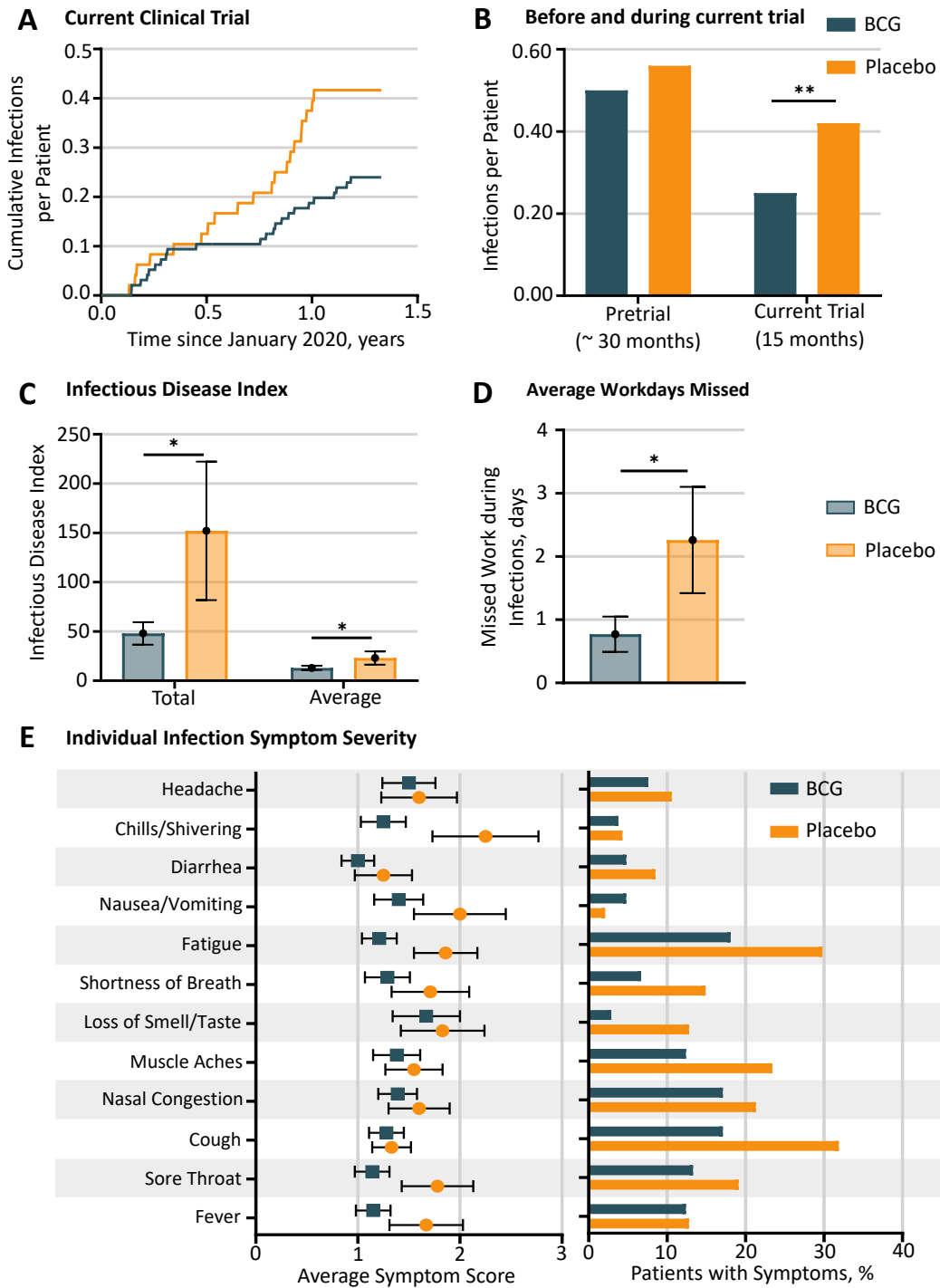
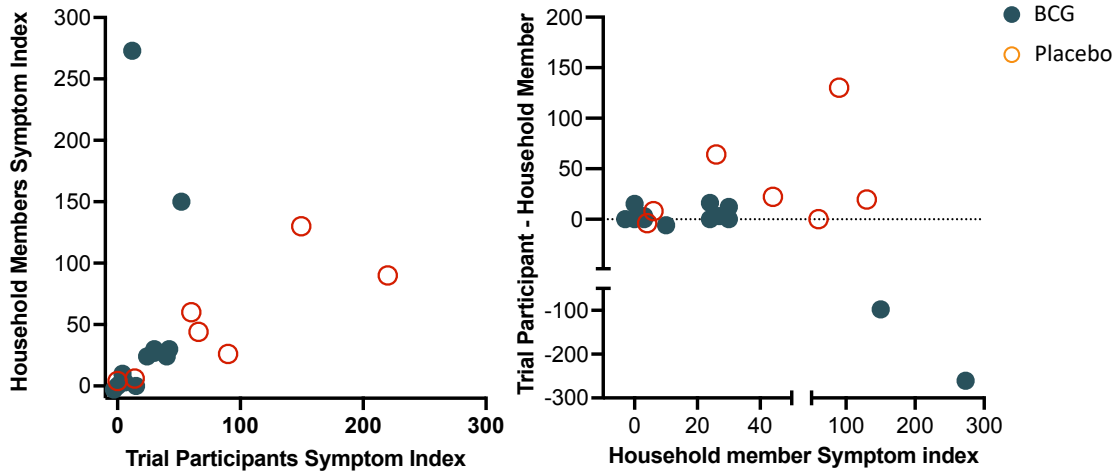


Figure 5.

A Total Infectious Symptom Index



B Symptom Severity Comparison

